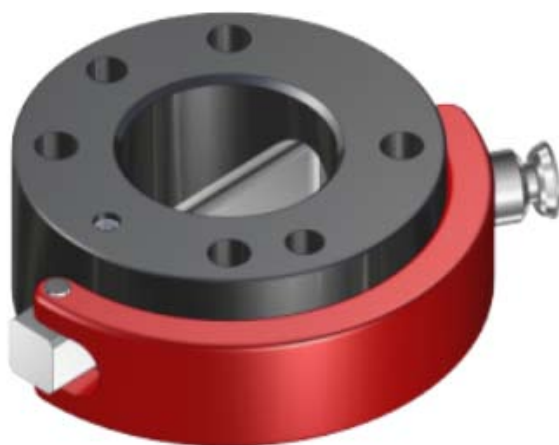


grip 工業機器人周邊部件



EXCHANGE
工業機器人手動快速換模系統

MGW
SHW
SWA
SWS

手動快速
換模系列

Quick-
Change-
System

Gi
GiS
GP
GZ

Internal
Gripper
&
Gripper

氣囊
內孔夾持
&
氣壓夾爪

DDF
MEK
SEK

Swivel
&
Energy
Coupling

氣壓
旋轉接頭
&
氣/電
快速連接器



MGW 手動氣壓夾爪快速換模系統 Manual Gripper Changing System

- 規格：6種
- 不需要工具就可拆和裝
- 承受低重量的高負載
- 5,000次更換週期壽命
- 符合DIN EN ISO 9409-1的連接端面
- 最高承受荷重：10 ~ 120Kg

03~09頁



SHW 推力槓桿換模系統 Thrust Lever-Changing System

- 規格：5種
- 承受低重量的高負載
- 重複精度：±0.02mm
- 50,000次更換週期壽命
- 符合DIN EN ISO 9409-1的連接端面
- 最高承受荷重：12 ~ 75Kg
- 不需要工具就可拆和裝

10~15頁



SWA換模連接系統 Quick-Change-Adapter

- 規格：6種
- 重複精度：±0.02mm
- 承受低重量的高負載
- 50,000次更換週期壽命
- 符合DIN EN ISO 9409-1的連接端面
- 最高承受荷重：8 ~ 62Kg

16~22頁



SWS 快速換模系統 Quick-Change-System

- 規格：9種
- 重複精度：±0.02mm
- 承受低重量的高負載
- 50,000次更換週期壽命
- 符合DIN EN ISO 9409-1的連接端面
- 最高承受荷重：14 ~ 200Kg

24~33頁

氣壓內孔夾具 Internal Gripper & 氣壓夾爪 Gripper

Gi 氣囊內孔夾具
4~20mm



GiS 氣囊內孔夾具
5~20mm



GP 氣壓平行夾爪



GZ 氣壓夾爪
Y型(60度)



氣壓旋轉接頭 Multiport Swivel & 氣/真空和電信號-快速連接器 Multi-Energy-Coupling

DDF 空氣4通道
旋轉接頭



MEK 氣/電
快速連接器



SEK 氣/電
快速連接器



MGW 夾爪快速換模系統

Manual Gripper Changing System



MGW 夾爪 快速換模 系列

- MGW050
- MGW063
- MGW080
- MGW100
- MGW125
- MGW160

Manual
Gripper
Changing
System

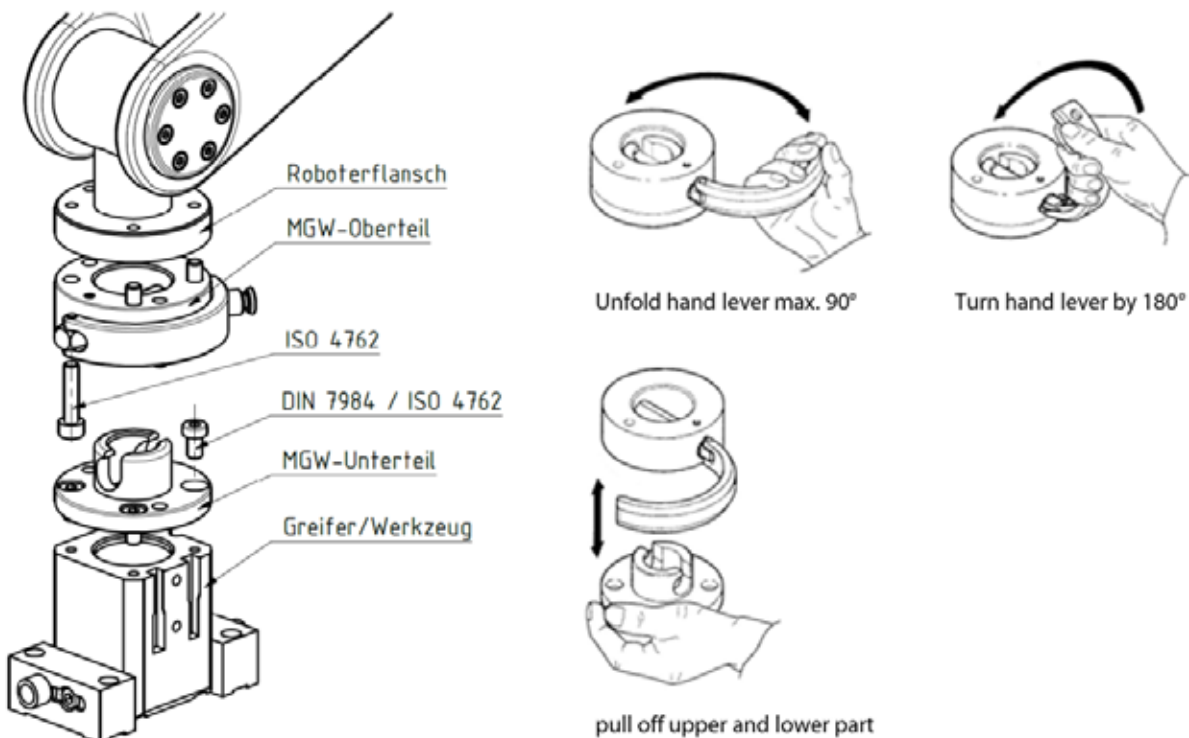


操作模式：通過半圓柱形螺栓旋轉180° 不需要工具就可拆和裝

優點：

- 規格：6種
- 由高強度鋁製成，重量輕，陽極氧化
- 5,000次更換週期壽命
- 彈性鎖定銷將手柄固定在獨立釋放位置
- 最高承受荷重：10 ~ 120Kg
- 承受低重量的高負載
- 符合DIN EN ISO 9409-1的連接端面
- 可根據客戶的要求設計

MGW 拆/裝方式和步驟



版權所有：丹耀貿易有限公司

Danyao Trading Co., Ltd.

© 目錄上所有的功能尺寸及公差僅供參考，本公司保有變更之權力並不事先通知。 © 如有任何疑問&特殊需求，請洽詢本公司。



1



2

Operating mode:

By rotating the semi-cylindrical bolt by 180° the upper part (1) and the lower part (2) are braced in a form-closed manner

Advantages:

Withstands high loads with low dead weight

Can be released and closed with one handle

High repeatability +/- 0.02 mm

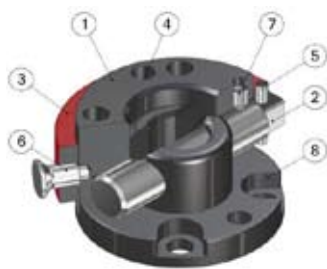
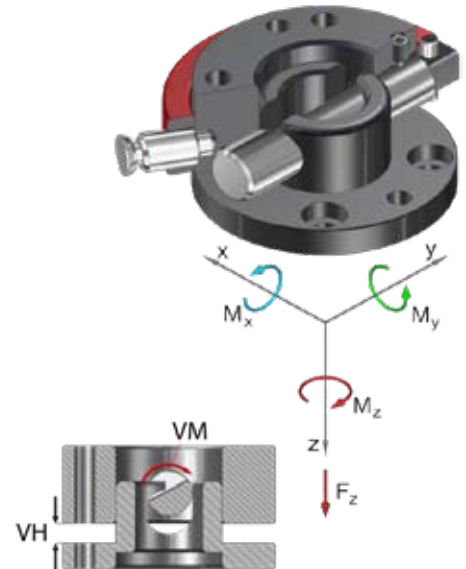
Resilient locking pin secures hand lever against independent releasing

holds up to 5.000 changing cycles

During locking, the lower part is pulled around the locking stroke

Interface acc. to DIN EN ISO 9409-1

| Technical specifications | | MGW050 | | |
|---------------------------------|------------|-----------|-------|--------------|
| Basic material | | Al. anod. | VA | St, nitrated |
| External diameter x Height [mm] | | 50 x 30 | | |
| Pitch circle diameter [mm] | | 40 | | |
| Repeatability +/- [mm] | | 0,02 | | |
| Tension Fz [N] | | 700 | 1.100 | 1.320 |
| Compressive -Fz [kN] | | 48 | 72 | 96 |
| Torsion Mz [Nm] | | 40 | 60 | 78 |
| Bend Mx, My [Nm] | | 50 | 70 | 80 |
| Mass [kg] | upper part | 0,14 | 0,28 | |
| | lower part | 0,05 | 0,13 | |
| Recommended load [kg] | | 10 | 14 | 16 |
| Locking moment VM [Nm] | | 1 - 4 | 2 - 6 | |
| Locking stroke VH [mm] | | 0 - 5 | | |



| Pos. | Description |
|------|-----------------------|
| 1 | Upper part |
| 2 | Semi-cylindrical bolt |
| 3 | Hand lever |
| 4 | Index pin |
| 5 | Cylinder bolt |
| 6 | Spring locking pin |
| 7 | Setscrew |
| 8 | Lower part |

Manual Gripper Changing System Ø50...

G-MGW050-20 drilled acc. to ISO, upper part, Al, anodized

G-MGW050-20-N drilled acc. to ISO, upper part, steel, nitrated

G-MGW050-20-V drilled acc. to ISO, upper part, VA

G-MGW050-2U drilled acc. to ISO, lower part, Al, anodized

G-MGW050-2U-N drilled acc. to ISO, lower part, steel, nitrated

G-MGW050-2U-V drilled acc. to ISO, lower part, VA

Replacement semi-cylindrical bolt...

EG-MGW050-HB for MGW050

EG-MGW050-HB-VA for MGW050, out off VA

Replacement hand lever

EG-MGW050-HH for MGW050

MGW063 夾爪快速換模系統



Manual Gripper Changing System



Operating mode:

By rotating the semi-cylindrical bolt by 180° the upper part (1) and the lower part (2) are braced in a form-closed manner

Advantages:

Withstands high loads with low dead weight

Can be released and closed with one handle

High repeatability +/- 0.02 mm

Resilient locking pin secures hand lever against independent releasing

Optional connection of a power coupling MEK for electr. and pneum.

Implementations

holds up to 5.000 changing cycles

During locking, the lower part is pulled around the locking stroke

Interface acc. to DIN EN ISO 9409-1

MGW 夾爪 快速換模 系列

MGW050

MGW063

MGW080

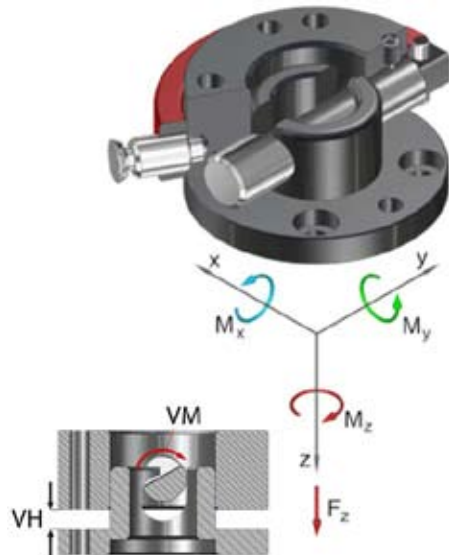
MGW100

MGW125

MGW160

Manual Gripper Changing System

| Technical specifications | | MGW063 | | |
|---------------------------------|------------|-----------|-------|--------------|
| Basic material | | Al. anod. | VA | St, nitrated |
| External diameter x Height [mm] | | 63 x 32 | | |
| Pitch circle diameter [mm] | | 50 | | |
| Repeatability +/- [mm] | | 0,02 | | |
| Tension Fz [N] | | 900 | 1.500 | 1.800 |
| Compressive -Fz [kN] | | 89 | 134 | 178 |
| Torsion Mz [Nm] | | 60 | 80 | 105 |
| Bend Mx, My [Nm] | | 70 | 100 | 115 |
| Mass [kg] | upper part | 0,26 | 0,48 | |
| | lower part | 0,08 | 0,23 | |
| Recommended load [kg] | | 16 | 20 | 22 |
| Locking moment VM [Nm] | | 1,5 - 5 | 3 - 8 | |
| Locking stroke VH [mm] | | 0 - 6 | | |



Description

| Pos. | Upper part |
|------|--------------------|
| 1 | Upper Part |
| 2 | Hand lever |
| 3 | Hand Lever |
| 4 | Index pin |
| 5 | Cylinder bolt |
| 6 | Spring locking pin |
| 7 | Setscrew |
| 8 | Lower part |

Manual Gripper Changing System Ø63...

| | |
|---------------|--|
| G-MGW063-2O | drilled acc. to ISO, upper part, Al, anodized |
| G-MGW063-2OE | drilled acc. to ISO, upper part, E-Mounting, Al, anodized |
| G-MGW063-2OEN | drilled acc. to ISO, upper part, E-Mounting, steel, nitrated |
| G-MGW063-2O-N | drilled acc. to ISO, upper part, steel, nitrated |
| G-MGW063-2O-V | drilled acc. to ISO, upper part, VA |
| G-MGW063-2U | drilled acc. to ISO, lower part, Al, anodized |
| G-MGW063-2UE | drilled acc. to ISO, lower part, E-Mounting, Al, anodized |
| G-MGW063-2UEN | drilled acc. to ISO, lower part, E-Mounting, steel, nitrated |
| G-MGW063-2U-N | drilled acc. to ISO, lower part, steel, nitrated |
| G-MGW063-2U-V | drilled acc. to ISO, lower part, VA |

Replacement semi-cylindrical bolt...

| | |
|-----------------|------------------------|
| EG-MGW063-HB | for MGW063 |
| EG-MGW063-HB-VA | for MGW063, out off VA |

Replacement hand lever

| | |
|--------------|------------|
| EG-MGW063-HH | for MGW063 |
|--------------|------------|

MGW 夾爪 快速換模 系列

MGW050

MGW063

MGW080

MGW100

MGW125

MGW160

Manual
Gripper
Changing
System



Operating mode:

By rotating the semi-cylindrical bolt by 180° the upper part (1) and the lower part (2) are braced in a form-closed manner

Advantages:

Withstands high loads with low dead weight

Can be released and closed with one handle

High repeatability +/- 0.02 mm

Resilient locking pin secures hand lever against independent releasing

Optional connection of a power coupling MEK for electr. and pneum.

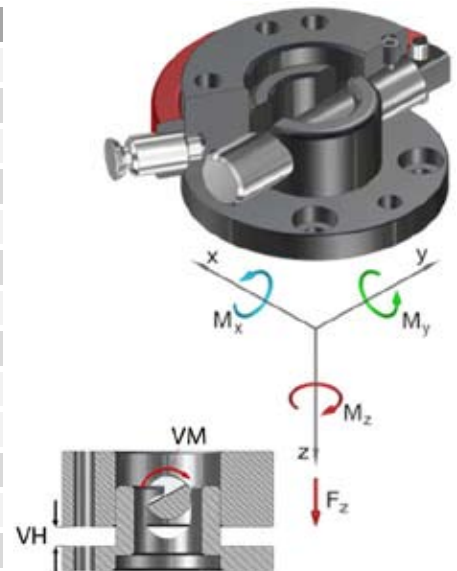
Implementations

holds up to 5.000 changing cycles

During locking, the lower part is pulled around the locking stroke

Interface acc. to DIN EN ISO 9409-1

| Technical specifications | | MGW080 | |
|---------------------------------|------------|-----------|--------------|
| Basic material | | Al. anod. | St, nitriert |
| External diameter x Height [mm] | | 80 x 37 | |
| Pitch circle diameter [mm] | | 63 | |
| Repeatability +/- [mm] | | 0,02 | |
| Tension Fz [N] | | 1.000 | 3.000 |
| Compressive -Fz [kN] | | 157 | 313 |
| Torsion Mz [Nm] | | 80 | 120 |
| Bend Mx, My [Nm] | | 100 | 160 |
| Mass [kg] | upper part | 0,45 | 0,92 |
| | lower part | 0,15 | 0,5 |
| Recommended load [kg] | | 20 | 28 |
| Locking moment VM [Nm] | | 1,5 - 6 | 3 - 9 |
| Locking stroke VH [mm] | | 0 - 8 | |



| Pos. | Description |
|------|-----------------------|
| 1 | Upper part |
| 2 | semi-cylindrical bolt |
| 3 | Hand lever |
| 4 | Index pin |
| 5 | Cylinder bolt |
| 6 | Spring locking pin |
| 7 | Setscrew |
| 8 | Lower part |

Manual Gripper Changing System Ø80...

| | |
|---------------|--|
| G-MGW080-20 | drilled acc. to ISO, upper part, Al, anodized |
| G-MGW080-20E | drilled acc. to ISO, upper part, E-Mounting, Al, anodized |
| G-MGW080-20EN | drilled acc. to ISO, upper part, E-Mounting, steel, nitrated |
| G-MGW080-20-N | drilled acc. to ISO, upper part, steel, nitrated |
| G-MGW080-2U | drilled acc. to ISO, lower part, Al, anodized |
| G-MGW080-2UE | drilled acc. to ISO, lower part, E-Mounting, Al, anodized |
| G-MGW080-2UEN | drilled acc. to ISO, lower part, E-Mounting, steel, nitrated |
| G-MGW080-2U-N | drilled acc. to ISO, lower part, steel, nitrated |

Replacement semi-cylindrical bolt...

| | |
|-----------------|-----------------------|
| EG-MGW080-HB | for MGW080 |
| EG-MGW080-HB-VA | for MGW080, ou off VA |

Replacement hand lever

| | |
|--------------|------------|
| EG-MGW080-HH | for MGW080 |
|--------------|------------|

© 目錄上所有的功能尺寸及公差僅供參考，本公司保有變更之權力並不事先通知。 © 如有任何疑問&特殊需求，請洽詢本公司。

MGW100 夾爪快速換模系統



Manual Gripper Changing System

MGW 夾爪 快速換模 系列

MGW050

MGW063

MGW080

MGW100

MGW125

MGW160

Manual
Gripper
Changing
System



Operating mode:

By rotating the semi-cylindrical bolt by 180° the upper part (1) and the lower part (2) are braced in a form-closed manner

Advantages:

Withstands high loads with low dead weight

Can be released and closed with one handle

High repeatability +/- 0.02 mm

Resilient locking pin secures hand lever against independent releasing

Optional connection of a power coupling MEK for electr. and pneum.

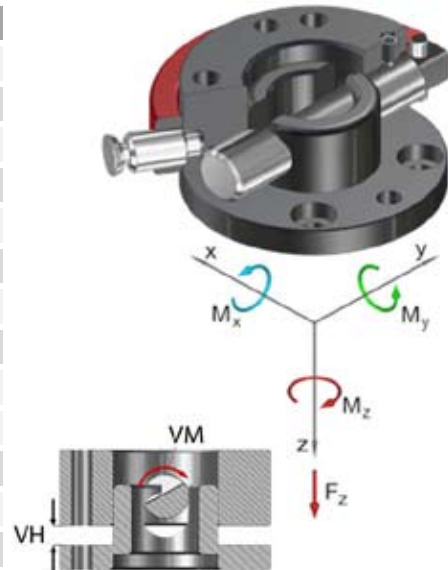
Implementations

holds up to 5.000 changing cycles

During locking, the lower part is pulled around the locking stroke

Interface acc. to DIN EN ISO 9409-1

| Technical specifications | | MGW100 | |
|---------------------------------|------------|-----------|--------------|
| Basic material | | Al. anod. | St, nitriert |
| External diameter x Height [mm] | | 100 x 45 | |
| Pitch circle diameter [mm] | | 80 | |
| Repeatability +/- [mm] | | 0,02 | |
| Tension Fz [N] | | 1.200 | 4.200 |
| Compressive -Fz [kN] | | 219 | 439 |
| Torsion Mz [Nm] | | 110 | 185 |
| Bend Mx, My [Nm] | | 130 | 205 |
| Mass [kg] | upper part | 0,74 | 1,53 |
| | lower part | 0,35 | 1,01 |
| Recommended load [kg] | | 28 | 39 |
| Locking moment VM [Nm] | | 2 – 10 | 3 – 14 |
| Locking stroke VH [mm] | | 0 – 8 | |



| Pos. | Description |
|------|-----------------------|
| 1 | Upper part |
| 2 | semi-cylindrical bolt |
| 3 | Hand lever |
| 4 | Index pin |
| 5 | Cylinder bolt |
| 6 | Spring locking pin |
| 7 | Setscrew |
| 8 | Lower part |

Manual Gripper Changing System Ø100...

| | |
|---------------|--|
| G-MGW100-20 | drilled acc. to ISO, upper part, Al, anodized |
| G-MGW100-20E | drilled acc. to ISO, upper part, E-Mounting, Al, anodized |
| G-MGW100-20EN | drilled acc. to ISO, upper part, E-Mounting, steel, nitrated |
| G-MGW100-20-N | drilled acc. to ISO, upper part, steel, nitrated |
| G-MGW100-2U | drilled acc. to ISO, lower part, Al, anodized |
| G-MGW100-2UE | drilled acc. to ISO, lower part, E-Mounting, Al, anodized |
| G-MGW100-2UEN | drilled acc. to ISO, lower part, E-Mounting, steel, nitrated |
| G-MGW100-2U-N | drilled acc. to ISO, lower part, steel, nitrated |

Replacement semi-cylindrical bolt...

| | |
|-----------------|------------------------|
| EG-MGW100-HB | for MGW100 |
| EG-MGW100-HB-VA | for MGW100, out off VA |

Replacement hand lever

| | |
|--------------|------------|
| EG-MGW100-HH | for MGW100 |
|--------------|------------|

MGW 快速換模 系列

MGW050

MGW063

MGW080

MGW100

MGW125

MGW160

Manual
Gripper
Changing
System



Operating mode:

By rotating the semi-cylindrical bolt by 180° the upper part (1) and the lower part (2) are braced in a form-closed manner

Advantages:

Withstands high loads with low dead weight

Can be released and closed with one handle

High repeatability +/- 0.02 mm

Resilient locking pin secures hand lever against independent releasing

Optional connection of a power coupling MEK for electr. and pneum.

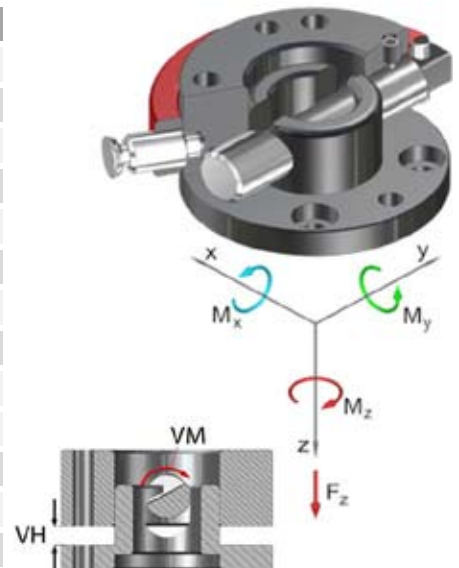
Implementations

holds up to 5.000 changing cycles

During locking, the lower part is pulled around the locking stroke

Interface acc. to DIN EN ISO 9409-1

| Technical specifications | | MGW125 | |
|---------------------------------|------------|-----------|-------------|
| Basic material | | Al. anod. | St, nitrirt |
| External diameter x Height [mm] | | 125 x 50 | |
| Pitch circle diameter [mm] | | 100 | |
| Repeatability +/- [mm] | | 0,02 | |
| Tension Fz [N] | | 1.500 | 5.200 |
| Compressive -Fz [kN] | | 377 | 754 |
| Torsion Mz [Nm] | | 150 | 210 |
| Bend Mx, My [Nm] | | 180 | 250 |
| Mass [kg] | upper part | 1,3 | 2,8 |
| | lower part | 0,55 | 1,6 |
| Recommended load [kg] | | 40 | 55 |
| Locking moment VM [Nm] | | 2 - 16 | 3 - 20 |
| Locking stroke VH [mm] | | 0 - 8 | |



| Pos. | Description |
|------|-----------------------|
| 1 | Upper part |
| 2 | semi-cylindrical bolt |
| 3 | Hand lever |
| 4 | Index pin |
| 5 | Cylinder bolt |
| 6 | Spring locking pin |
| 7 | Setscrew |
| 8 | Lower part |

Manual Gripper Changing System Ø125...

| | |
|---------------|--|
| G-MGW125-20 | drilled acc. to ISO, upper part, Al, anodized |
| G-MGW125-20E | drilled acc. to ISO, upper part, E-Mounting, Al, anodized |
| G-MGW125-20EN | drilled acc. to ISO, upper part, E-Mounting, steel, nitrated |
| G-MGW125-20-N | drilled acc. to ISO, upper part, steel, nitrated |
| G-MGW125-2U | drilled acc. to ISO, lower part, Al, anodized |
| G-MGW125-2UE | drilled acc. to ISO, lower part, E-Mounting, Al, anodized |
| G-MGW125-2UEN | drilled acc. to ISO, lower part, E-Mounting, steel, nitrated |
| G-MGW125-2U-N | drilled acc. to ISO, lower part, steel, nitrated |

Replacement semi-cylindrical bolt...

| | |
|-----------------|------------------------|
| EG-MGW125-HB | for MGW125 |
| EG-MGW125-HB-VA | for MGW125, out off VA |

Replacement hand lever

| | |
|--------------|------------|
| EG-MGW125-HH | for MGW125 |
|--------------|------------|

© 目錄上所有的功能尺寸及公差僅供參考，本公司保有變更之權力並不事先通知。◎ 如有任何疑問&特殊需求請洽詢本公司。

MGW160 夾爪快速換模系統



Manual Gripper Changing System



Operating mode:

By rotating the semi-cylindrical bolt by 180° the upper part (1) and the lower part (2) are braced in a form-closed manner

Advantages:

Withstands high loads with low dead weight

Can be released and closed with one handle

High repeatability +/- 0.02 mm

Resilient locking pin secures hand lever against independent releasing

Optional connection of a power coupling MEK for electr. and pneum.

Implementations

holds up to 5.000 changing cycles

During locking, the lower part is pulled around the locking stroke

Interface acc. to DIN EN ISO 9409-1

MGW 快速換模 系列

MGW050

MGW063

MGW080

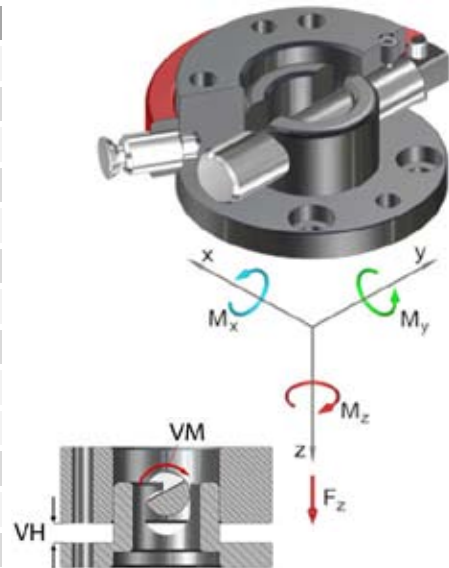
MGW100

MGW125

MGW160

Manual
Gripper
Changing
System

| Technical specifications | | MGW160 | |
|---------------------------------|------------|-----------|-------------|
| Basic material | | Al. anod. | St, nitrirt |
| External diameter x Height [mm] | | 160 x 70 | |
| Pitch circle diameter [mm] | | 125 | |
| Repeatability +/- [mm] | | 0,02 | |
| Tension Fz [N] | | 2.500 | 10.000 |
| Compressive -Fz [kN] | | 626 | 1.252 |
| Torsion Mz [Nm] | | 250 | 1.000 |
| Bend Mx, My [Nm] | | 320 | 1.000 |
| Mass [kg] | upper part | 2,8 | 6,6 |
| | lower part | 1,3 | 3,85 |
| Recommended load [kg] | | 75 | 120 |
| Locking moment VM [Nm] | | 3 - 24 | 4 - 30 |
| Locking stroke VH [mm] | | 0 - 10 | |



| Pos. | Description |
|------|-----------------------|
| 1 | Upper part |
| 2 | semi-cylindrical bolt |
| 3 | Hand lever |
| 4 | Index pin |
| 5 | Cylinder bolt |
| 6 | Spring locking pin |
| 7 | Setscrew |
| 8 | Lower part |

Manual Gripper Changing System Ø160...

| | |
|---------------|--|
| G-MGW160-20 | drilled acc. to ISO, upper part, Al, anodized |
| G-MGW160-20E | drilled acc. to ISO, upper part, E-Mounting, Al, anodized |
| G-MGW160-20EN | drilled acc. to ISO, upper part, E-Mounting, steel, nitrated |
| G-MGW160-20-N | drilled acc. to ISO, upper part, steel, nitrated |
| G-MGW160-2U | drilled acc. to ISO, lower part, Al, anodized |
| G-MGW160-2UE | drilled acc. to ISO, lower part, E-Mounting, Al, anodized |
| G-MGW160-2UEN | drilled acc. to ISO, lower part, E-Mounting, steel, nitrated |
| G-MGW160-2U-N | drilled acc. to ISO, lower part, steel, nitrated |

Replacement semi-cylindrical bolt...

| | |
|-----------------|------------------------|
| EG-MGW160-HB | for MGW160 |
| EG-MGW160-HB-VA | for MGW160, out off VA |

Replacement hand lever

| | |
|--------------|------------|
| EG-MGW160-HH | for MGW160 |
|--------------|------------|